

e-Token Installation Process on Computer System

1. Capicom Software Installation -

➤ Follow these steps to register CAPICOM.DLL

- First Copy Capicom.dll to System32 folder in Windows Folder (e.g. c:\windows\system32)
- Click Start --> Run then write regsvr32 <Path of capicom.dll> then OK

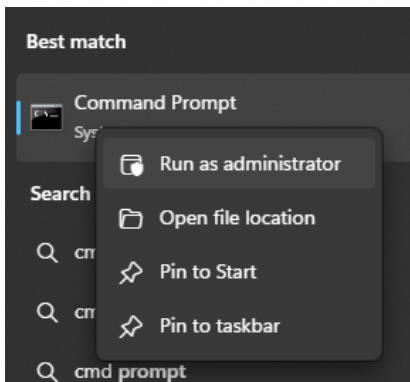
This will register Capicom.dll

➤ Otherwise follow these steps to register CAPICOM.DLL

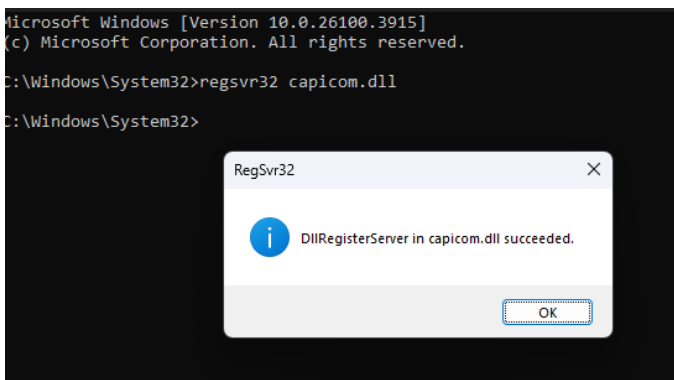
Window (C) -> Programme Files (x86) -> Microsoft CAPICOM 2.1.0.2 SDK -> Lib -> X86 -> capicom.dll (Copy this file)

Windows -> System32 and SysWOW64 folders (paste capicom.dll file here)

Cmd Commend Prompt -> Run as administrator



Open commend prompt -> regsvr32 capicom.dll <Enter>

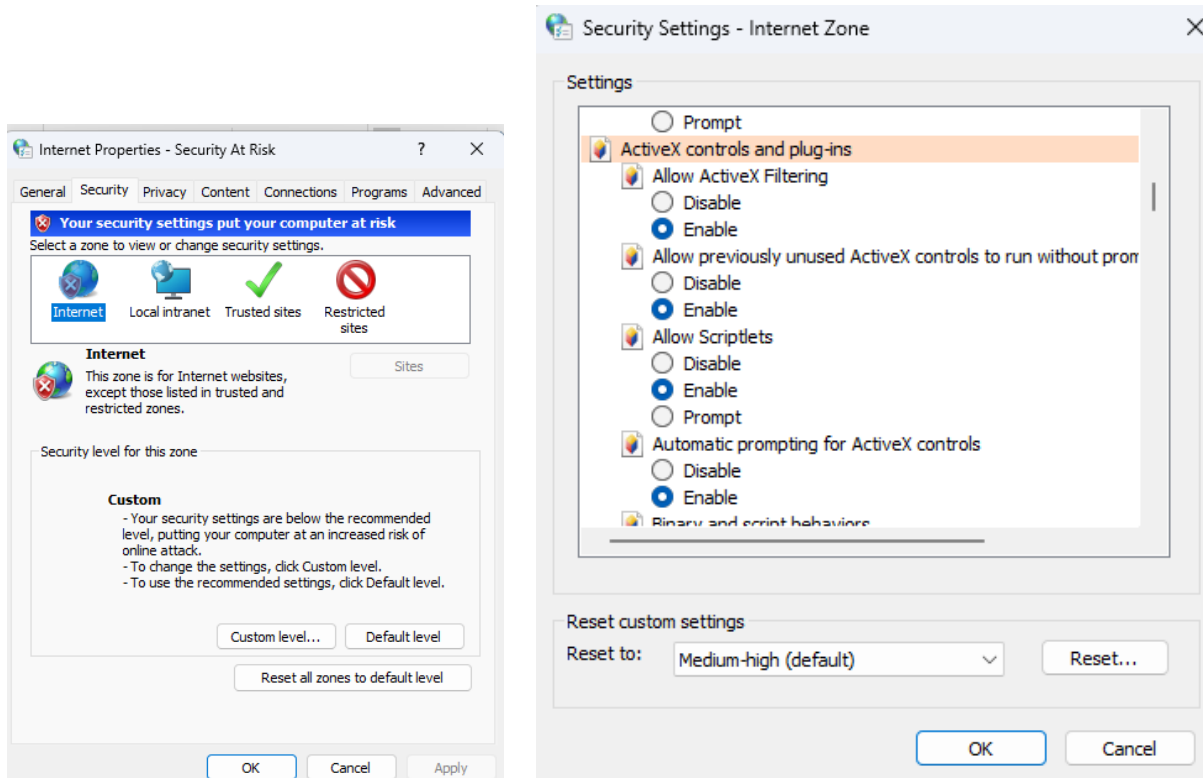


2. e-Token Installation –

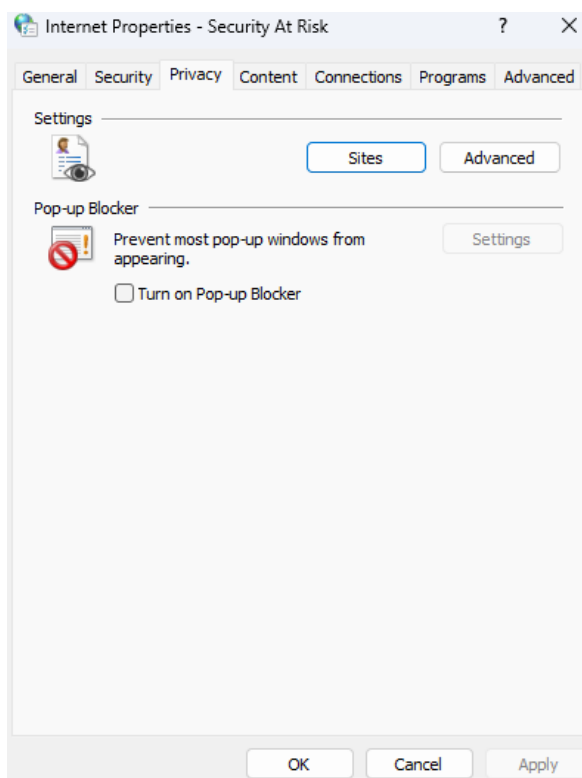
Setup file is in the e-Token, which will have to install in the system.

3. Setting of Internet Option in Microsoft Edge Browser –

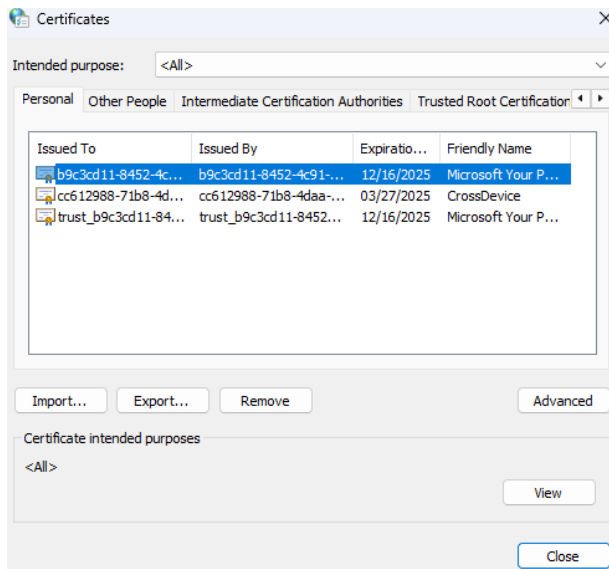
Windows Setting - Security - Custom Level - ActiveX controls and plug-ins - enable - --> OK



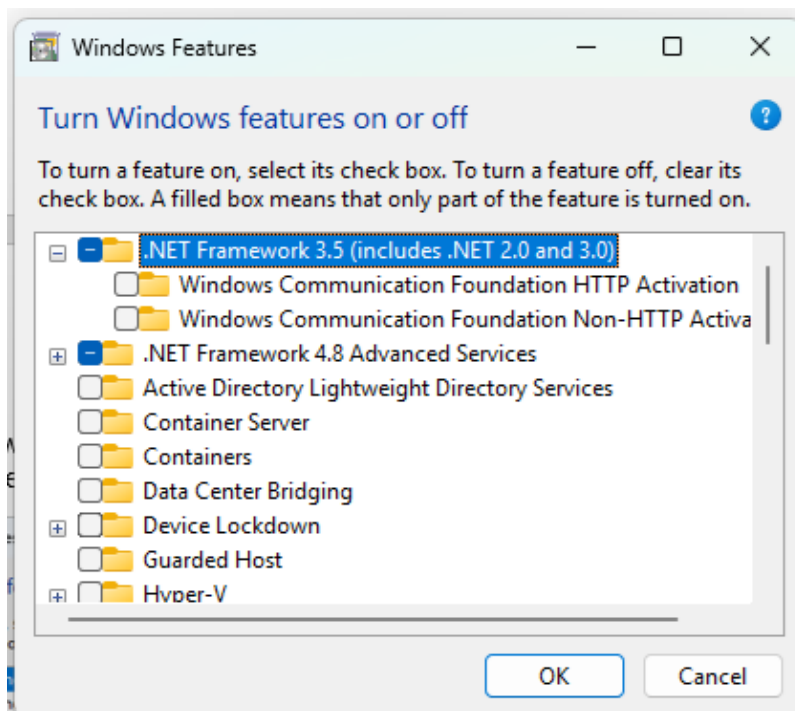
Privacy - turn on pop-up blocker - Uncheck --> Apply & OK



Content --> Certificates -->



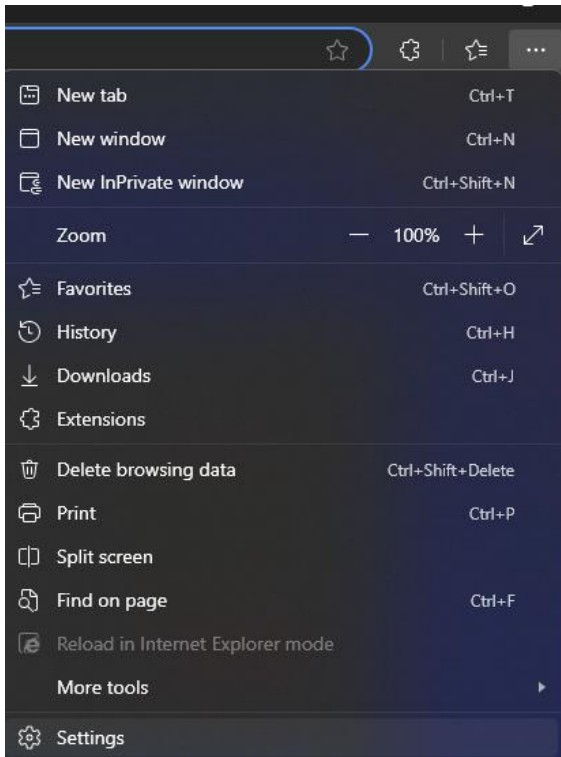
4. Turn windows features on or off - .Net framework 3.5 (includes .net 2.0 and 3.0) – Update in Old PCs



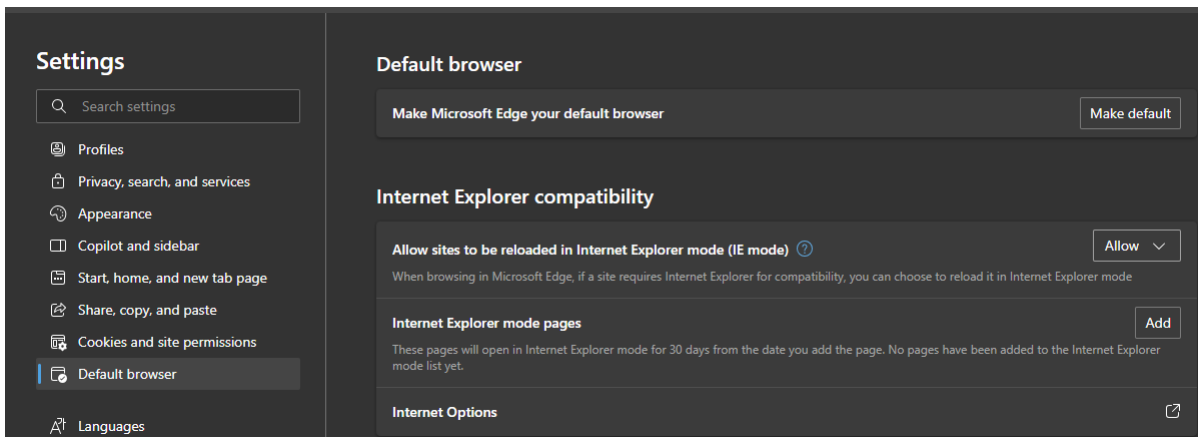
Net framework 3.5 (includes .net 2.0 and 3.0) -> check to -> OK

5. Microsoft Edge - Setting - Default Browser

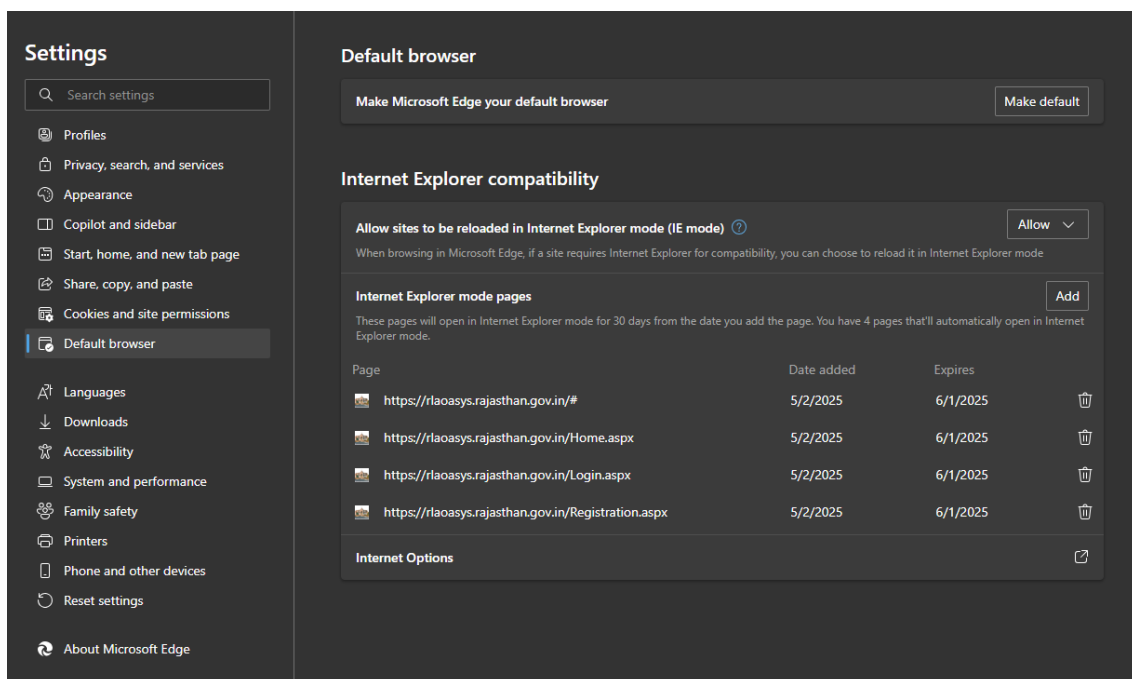
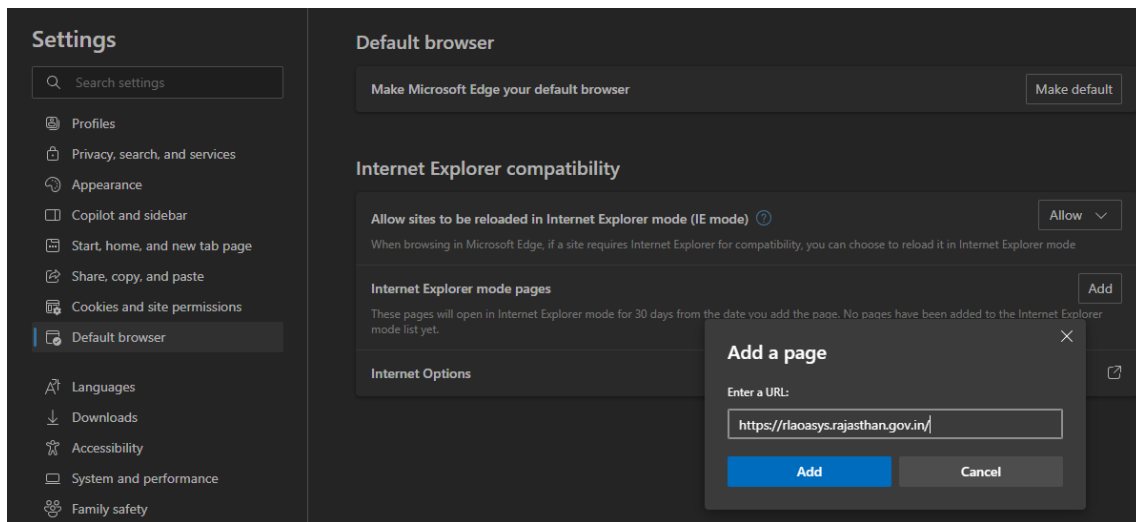
Microsoft Edge - Setting



Microsoft Edge – Setting – Default Browser - Internet Explorer compatibility - Allow sites to be reloaded in Internet Explorer mode (IE mode) - Allow



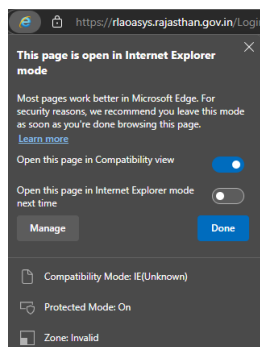
Default Browser - Internet Explorer mode pages – Add a page URL <https://rlaoasys.rajasthan.gov.in>



6. Microsoft Edge Browser - Right Click - Reload in Internet Explorer mode

Open this page in compatibility view - on

Open this page in compatibility view next time – off



Then start the application in Microsoft Edge Browser.